

# CATALOG



ROYAL CROWN PLYWOOD

2026-2027



# ABOUT US

At Royal Crown Plywood, we are more than a supplier; we are the primary source of inspiration for Canada's leading architects, designers, and cabinet makers. Headquartered in Delta, BC, and Vaughan, ON, we operate as a direct importer and manufacturer, bypassing traditional dealer networks to provide our clients with direct access to the world's most refined wood products.

Our signature collections—including the prestigious Royal Select Facciata Collection and our high-performance PET Decorative Panels—are engineered to meet the highest aesthetic and functional demands. From the organic depth of our Rift-cut White Oak to the sophisticated texture of our Walnut MDF, every board is a testament to our obsession with quality. We are committed to a

sustainable future, ensuring all our materials meet rigorous CARB Phase 2 and TSCA Title VI certifications. At Royal Crown, we don't just deliver plywood; we deliver the foundation for your next masterpiece. Your vision deserves a foundation of unparalleled quality. At Royal Crown Plywood, we believe that the soul of a room lies in its materials. Our mission is to bridge the gap between global woodcraft mastery and your local design projects. By managing our own supply chain, we offer a curated selection of premium Baltic Birch Plywood and decorative panels that blend durability with timeless beauty.

We understand that our client, consistency is everything. That is why our four core principles—Trust, Quality, Price, and Service—guide

every shipment that leaves our warehouses. Whether you are seeking the ultra-modern finish of our High-Gloss PET panels or the rustic elegance of our "half-mountain" grain oak, we provide the expertise and the inventory to bring your dreams to life. Your happiness matters to us, and we prove it with every grain, every texture, and every delivery.

• Due to the printing technology, the color samples included in this catalog and the original product colors may differ in tone.

---

# INDEX

06-11.

Facciata

12-14.

White Oak

15.

Oak

16.

Walnut

17-19.

Recon

20-23.

Regal Collection(TFL)

24.

Vektra Collection (EB)

25.

PET

26.

MDF & HDF

27.

Baltic Birch Unfinished

28.

Plywood Unfinished

29.

Hardwood Veneer  
Plywood

30-31.

Brich Plywood Prefinished

32.

Red Oak Prefinished

33.

Melamine Plywood

34-35.

LSB & Particle Board

36-41.

Industry Guidel

---

RCP



---

# ROYAL CROWN PLYWOOD





WE PROUDLY OFFER OUR PREMIUM BRANDS:

CROWNPLY

FACCIATA

VEKTRA COLLECTION

REGAL COLLECTION





---

**NATURAL WALNUT  
L6011**

Natural Walnut is timeless and versatile, offering sophisticated depth without pretension. Its moody palette blends rich cocoa with charcoal and smoky purple streaks. In high-end minimalism, it serves as an organic warmth to balance industrial concrete, steel, or marble.

- Veneer:  
North American Walnut
- Veneer Cut:  
Quarter Cut & Flat Cut
- Veneer Match:  
Random Match
- Veneer Grade:  
AAA/AA



---

**ALAMO WALNUT  
L6012**

Alamo Walnut veneer blends modern sophistication with a curated aesthetic. Its rich palette spans warm, earthy browns nuanced by subtle charcoal and grey undertones.

- Veneer:  
North American Walnut
- Veneer Cut:  
Quarter Cut & Flat Cut
- Veneer Match:  
Random Match
- Veneer Grade:  
AAA/AA



---

**THERMO WALNUT  
L6013**

Smoked Walnut offers cinematic depth, trading warmth for a moody, espresso-washed aesthetic. Its creamy hazelnut base transitions seamlessly into rich, heavy chocolate accents.

- Veneer:  
North American Walnut
- Veneer Cut:  
Flat Cut
- Veneer Match:  
Random Match
- Veneer Grade:  
AAA/AA

**Size**

48" X 120" X 3/4"

**Size in Metric**

1220mm X 3050mm X 19mm

**Coating**

Sherwin-Williams

**Finishing**

Excimer Finish

**Veneer Thickness**

0.5MM

**Core Material**

MDF

**Environmental Standard**

Carb Phase 2 &amp; TSCA Title VI

**Sheets per Lift**

25

**ABS Edge Banding**

23 MM X 1 MM X 100 M

47 MM X 1 MM X 50 M

**Veneer**

Available

FACCIATA REPRESENTS  
THE PINNACLE OF  
SURFACE ENGINEERING.  
COMBINING THE WARMTH  
OF NATURAL WOOD  
GRAIN WITH THE  
RESILIENCE OF  
MODERN TECHNOLOGY.





### **LIGHT OAK** **L6009**

Scratch-resistant and stylish, this panel blends light tan and creamy beige with a soft golden glow. Its tactile warmth and timeless elegance make it ideal for Scandi-inspired or classic interiors.

**Veneer:**

North American White Oak

**Veneer Cut:**

Rift Cut

**Veneer Match:**

Random Match

**Veneer Grade:**

AAA/AA



### **RURAL OAK** **L6008**

Designed to evoke a warm, rustic, and weathered aesthetic, often inspired by aged wood found in traditional barns, farmhouses, or old fruit crates.

**Veneer:**

North American White Oak

**Veneer Cut:**

Rift Cut & Quarter Cut

**Veneer Match:**

Random Match

**Veneer Grade:**

AAA/AA



### **SAND ELM** **L6003**

Sand Elm veneer blends nature-inspired tranquility with high-end refinement. Its sandy-tan and silvery grey tones, accented by subtle red, create an organic warmth.

**Veneer:**

Elm

**Veneer Cut:**

Rift Cut & Quarter Cut

**Veneer Match:**

Random Match

**Veneer Grade:**

AAA/AA



### **LOGAN OAK** **L6007**

Infuse any interior with a sense of quiet luxury and refined elegance. This bold design choice delivers dramatic architectural depth, using shades of deep, velvety black to dark charcoal.

**Veneer:**

North American White Oak

**Veneer Cut:**

Rift Cut & Quarter Cut

**Veneer Match:**

Random Match

**Veneer Grade:**

AAA/AA



---

**SOFT OAK**  
**L6019**

Soft Oak veneer epitomizes subtle elegance and balance. Its flaxen-cream and warm-cashmere tones create a luminous warmth that redefines understated luxury.

Veneer:  
North American White Oak  
Veneer Cut:  
Rift Cut  
Veneer Match:  
Random Match  
Veneer Grade:  
AAA/AA



---

**PURE OAK**  
**L6020**

Pure Oak radiates a natural, organic clarity. Its pale-honey and soft-amber tones create a light-filled warmth that embodies modern minimalist living.

Veneer:  
North American White Oak  
Veneer Cut:  
Rift Cut & Flat Cut  
Veneer Match:  
Random Match  
Veneer Grade:  
AAA/AA



---

**CHOCOLATE ELM**  
**L6017**

Chocolate Elm captures sophisticated depth and timeless elegance. Its rich, cocoa-infused tones and deep charcoal grains create a rhythmic texture that exudes quiet luxury.

Veneer:  
Elm  
Veneer Cut:  
Rift Cut & Flat Cut  
Veneer Match:  
Random Match  
Veneer Grade:  
AAA/AA



---

**CLASSIC WALNUT**  
**L6014**

Classic Walnut blends nature-inspired serenity with sophisticated depth. Its deep cocoa and charcoal-grey tones create an organic warmth that redefines modern luxury.

Veneer:  
North American Walnut  
Veneer Cut:  
Flat Cut & Quarter Cut  
Veneer Match:  
Random Match  
Veneer Grade:  
AAA/AA

FACCIATA  
SEMI-TRANSPARENT  
LACQUERED VENEERS  
OFFER A MASTERFUL  
BALANCE OF PROTEC-  
TION AND POETRY. THIS  
SOPHISTICATED FINISH  
PRESERVES THE WOOD'S  
ORGANIC TACTILITY  
WHILE ADDING A  
LUSTROUS DEPTH THAT  
CELEBRATES EVERY  
NUANCE OF THE  
NATURAL GRAIN. IT IS A  
TRIBUTE TO RAW BEAU-  
TY, REFINED BY ARTISTRY.

**M006/M012**

**WHITE OAK**

*Rift Cut, Slip Match*

Size:

48"x120"x3/4"

49"x97"x3/4"

Size in Metric:

1220mmx3050mmx19mm

1245mmx2464mmx19mm

Veneer:

North American White Oak

Veneer Cut:

Rift Cut

Veneer Match:

Slip Match

Veneer Color:

Natural

Finishing:

Unfinished

Core Material:

MDF

Environmental Standard:

Carb Phase 2 & TSCA Title VI

Sheets per Lift:

25

Edge banding:

23/47/60mmx1mmx100m

23mmx0.5mmx100m





**M015/M034**  
**WHITE OAK**

*Rift Cut, Random Match*

Size:

48"x120"x3/4"

49"x97"x3/4"

Size in Metric:

1220mmx3050mmx19mm

1245mmx2464mmx19mm

Veneer:

North American White Oak

Veneer Cut:

Rift Cut

Veneer Match:

Random Match

Veneer Color:

Natural

Finishing:

Unfinished

Core Material:

MDF

Environmental Standard:

Carb Phase 2 & TSCA Title VI

Sheets per Lift:

25

Edge banding:

23/47/60mmx1mmx100m

23mmx0.5mmx100m

**M037**  
**WHITE OAK**

*Rift & Flat Cut,  
Random Match*

Size:

48"x120"x3/4"

Size in Metric:

1220mmx3050mmx19mm

Veneer:

North American White Oak

Veneer Cut:

Rift Cut and Flat Cut

Veneer Match:

Random Match

Veneer Color:

Natural

Finishing:

Unfinished

Core Material:

MDF

Environmental Standard:

Carb Phase 2 & TSCA Title VI

Sheets per Lift:

25

Edge banding:

23/47/60mmx1mmx100m

23mmx0.5mmx100m



**M009****OAK***Flat Cut, Random Match*

## Size:

48"x120"x3/4"

## Size in Metric:

1220mmx3050mmx19mm

## Veneer:

Oak

## Veneer Cut:

Flat Cut

## Veneer Match:

Random Match

## Veneer Color:

Natural

## Finishing:

Unfinished

## Core Material:

MDF

## Environmental Standard:

Carb Phase 2 &amp; TSCA Title VI

## Sheets per Lift:

25

## Edge banding:

Available

**M028/M013**

**WALNUT**

*Quarter & Flat cut,  
Random Match*

Size:

48"x120"x3/4"

49"x97"x3/4"

Size in Metric:

1220mmx3050mmx19mm

1245mmx2464mmx19mm

Veneer:

North American Walnut

Veneer Cut:

Quarter & Flat cut

Veneer Match:

Random Match

Veneer Color:

Natural

Finishing:

Unfinished

Core Material:

MDF

Environmental Standard:

Carb Phase 2 & TSCA Title VI

Sheets per Lift:

25

Edge banding:

23/60mmx1mmx100m





**M031/M035**  
**RECON WHITE OAK**  
*Rift Cut*

Size: 48"x120"x3/4"

49"x97"x3/4"

Size in Metric:

1220mmx3050mmx19mm

1245mmx2465mmx19mm

Veneer: Recon White Oak

Veneer Cut: Rift Cut

Veneer Match: Slip Match

Finishing: Unfinished

Core Material: MDF

Environmental Standard: Carb

Phase 2 & TSCA Title VI

Sheets per Lift: 25

Edge banding:

23/47mm x0.7mm x100m



**M041**  
**RECON WHITE OAK**  
*Thin Rift Cut*

Size: 48"x120"x3/4"

Size in Metric:

1220mmx3050mmx19mm

Veneer: Recon White Oak

Veneer Cut: Thin Rift Cut

Veneer Match: Slip Match

Finishing: Unfinished

Core Material: MDF

Environmental Standard: Carb

Phase 2 & TSCA Title VI

Sheets per Lift: 25

Edge banding: Available

---

**M032**  
**RECON WHITE OAK**

*Flat Cut*

Size: 48"x120"x3/4"

Size in Metric:

1220mmx3050mmx19mm

Veneer: Recon White Oak

Veneer Cut: Flat Cut

Veneer Match: Slip Match

Finishing: Unfinished

Core Material: MDF

Environmental Standard: Carb

Phase 2 & TSCA Title VI

Sheets per Lift: 25

Edge banding:

23/47mm x0.7mm x100m



---

**M027**  
**RECON**  
**CHAMPAGNE OAK**

*Thin Rift Cut*

Size: 48"x120"x3/4"

Size in Metric:

1220mmx3050mmx19mm

Veneer: Recon White Oak

Veneer Cut: Thin Rift Cut

Veneer Match: Slip Match

Finishing: Unfinished

Core Material: MDF

Environmental Standard: Carb

Phase 2 & TSCA Title VI

Sheets per Lift:25

Edge banding:

23mmx1mmx100m





**M039**  
**RECON WALNUT**  
*Quarter Cut*

Size: 48"x120"x3/4"

Size in Metric:

1220mmx3050mmx19mm

Veneer: Recon Walnut

Veneer Cut: Quarter Cut

Veneer Match: Slip Match

Finishing: Unfinished

Core Material: MDF

Environmental Standard: Carb

Phase 2 & TSCA Title VI

Sheets per Lift:25

Edge banding: Available



**M040**  
**RECON WALNUT**  
*Flat Cut*

Size: 48"x120"x3/4"

Size in Metric:

1220mmx3050mmx19mm

Veneer: Recon Walnut

Veneer Cut: Flat Cut

Veneer Match: Random Match

Finishing: Unfinished

Core Material: MDF

Environmental Standard: Carb

Phase 2 & TSCA Title VI

Sheets per Lift:25

Edge banding: Available

---

## REGAL COLLECTION TFL

Size: 49"x110"x3/4"

Size in Metric: 1245mmx2800mmx18mm

Surface: Melamine Infused Paper

Finishing: Textured & Synchronized Wood Grain

Environmental Standard: Carb Phase 2 & TSCA Title VI

Sheets per Lift: 25

Edge Banding: Available

The Regal Collection is a premium woodgrain TFL series, designed by expert veneer specialists and crafted using high-quality decorative papers, delivering the authentic look of natural wood with refined consistency and durability.

- Designer-Inspired Woodgrain – Developed by expert veneer designers to capture the depth and authenticity of natural wood
- Premium Surface Quality – Crafted with high-grade decorative papers for rich texture and consistent finish
- Engineered Precision – Manufactured by experienced technicians to ensure durability, stability, and reliable performance

**W001**  
**Classic Oak**  
*Rift Cut*



**W002**  
**Linear Poplar**  
*Rift Cut*

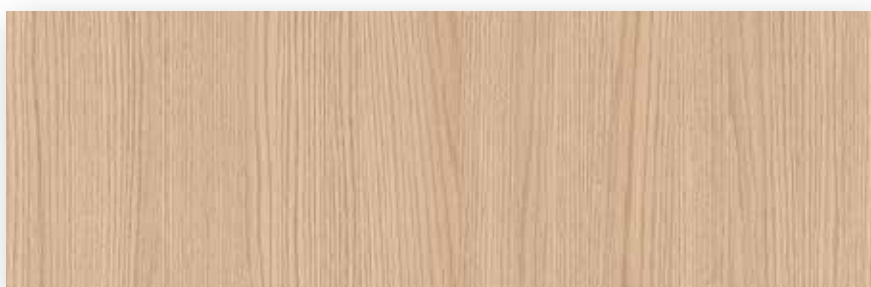




**W003**  
**Amber Oak**  
*Random Match*



**W004**  
**Natural Oak**  
*Random Match*



**W005**  
**Barrie Oak**  
*Random Match*



**W006**  
**Cloud Mist Oak**  
*Random Match*



**W007**  
**Walley Oak**  
*Random Match*

**W008**  
**Maritimes Oak**  
*Random Match*



**W009**  
**Thornhill Oak**  
*Random Match*



**W010**  
**Niagara Oak**  
*Rift Cut*



**W011**  
**Deep Forrest Oak**  
*Random Match*



**W012**  
**Richmond Walnut**  
*Random Match*





**W013**  
**Alpine Walnut**  
*Random Match*



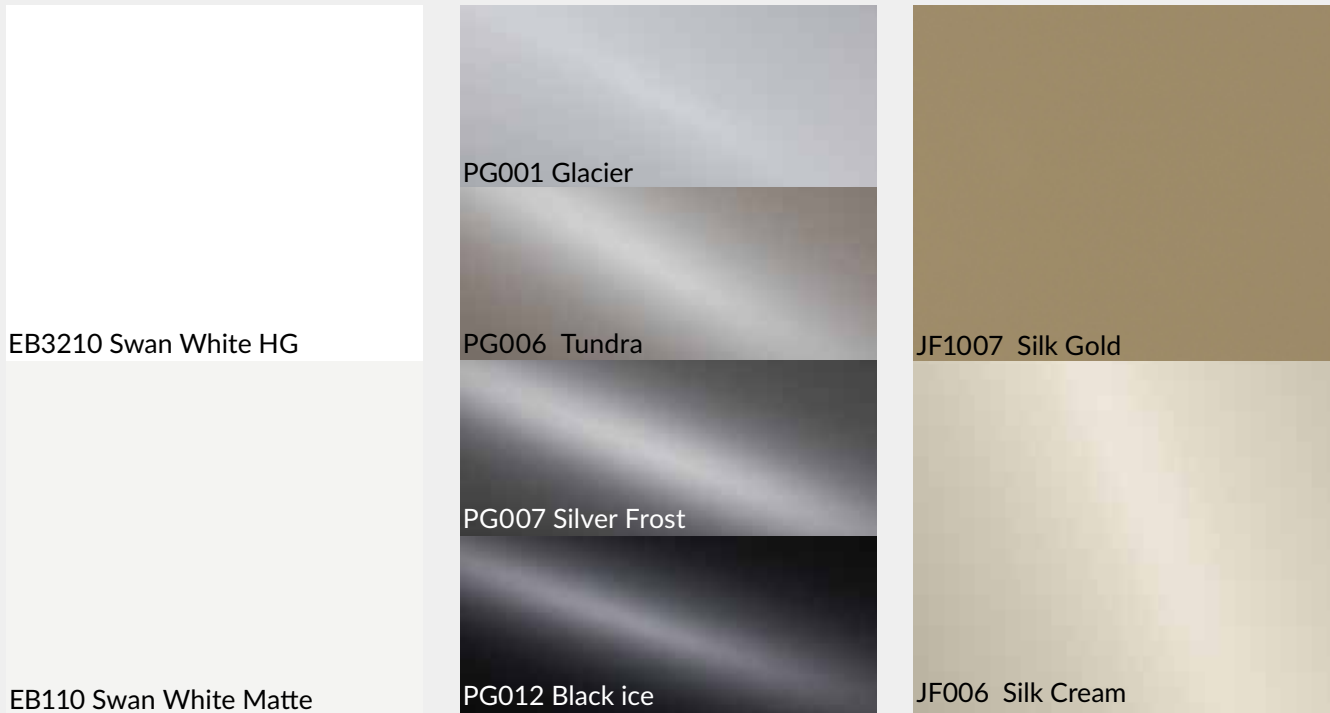
**W014**  
**Cocoa Brown Walnut**  
*Random Match*



**W015**  
**Midnight Walnut**  
*Rift Cut*

Our TFL shaker door solution combines timeless shaker styling with the durability and consistency of premium thermally fused laminate surfaces. Produced using premium German-made Schattdecor melamine paper, it delivers authentic woodgrain aesthetics, excellent color stability, scratch resistance, and a refined seamless appearance for modern cabinetry applications.





---

## VEKTRA COLLECTION (EB)

Size: 49"x110"x3/4"

Size in Metric: 1245mmx2800mmx18mm

Surface: EB Film

Core Materials: MDF

Environmental Standard: Carb Phase 2 & TSCA Title VI

Sheets per Lift: 25

Edge banding: Available

Electron Beam Cured surfaces represent a new standard in finishing technology, offering ultra-durable, scratch-resistant performance with refined aesthetics and exceptional longevity.

Solid Color - Clean, uniform tones with a smooth, contemporary look, ideal for minimalist and modern applications

Crystal Finish - A rich, thick surface film infused with fine glitter elements.

Silk Finish - A smooth, silk-like finish with a soft luster.

---

## PET

Size: 49"x110"x3/4"

Size in Metric: 1245mmx2800mmx18mm

Surface: Polymer

Finish: HG and Matte Both Side ( White only)

High Gloss One Side & Same Color Melamine Paper

Matte One Side & Same Color Melamine Paper

Environmental Standard: Carb Phase 2 & TSCA Title VI

Sheets per Lift: 25

Edge Banding: 23/47mm X1mmx100m

F028 Pearl White HG / F032 Pearl White Matte

F025 Porsche Grey HG / F011 Porsche Grey Matte

F021 Cloud Grey HG / F002 Cloud Grey Matte

F016 Dark Grey HG / F015 Dark Grey Matte

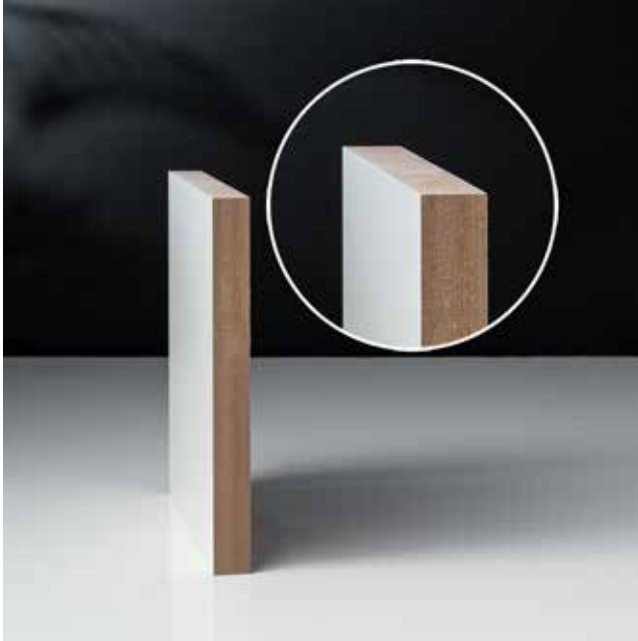
F033 Delta Grey High Gloss

F018 Sapphire Blue HG / F017 Sapphire Blue Matte

F014 Nero Black HG / F013 Nero Black Matte

---

## MDF & HDF



### **H001** **HIGH DENSITY** **FIBERBOARD** *Painting Grade*

Size: 49"x97"x3/4"

Size in Metric:

1245mmx2465mmx19mm

Surface:

One Side Raw One Side White  
Melamine

Environmental Standard:

Carb Phase 2 & TSCA Title VI

Sheets per Lift : 40

---

### **H005** **HIGH DENSITY** **FIBERBOARD** *Thermofoil Grade*

Size: 49"x97"x3/4"

Size in Metric:

1245mmx2465mmx19mm

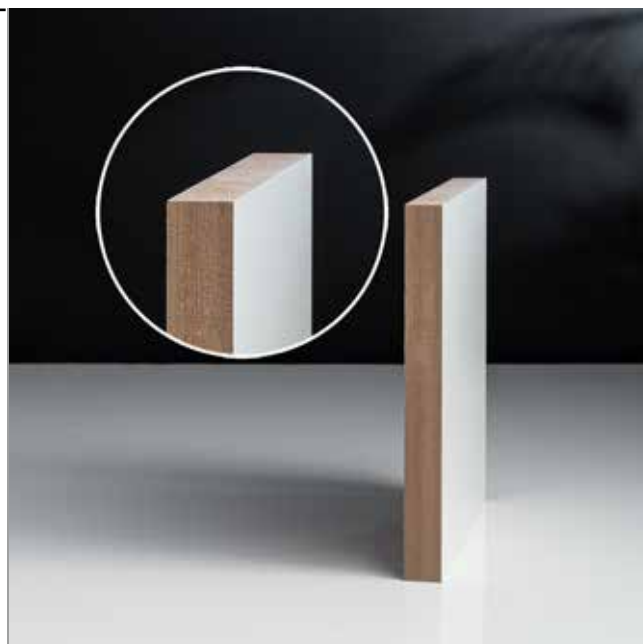
Surface:

One Side Raw One Side White  
Melamine

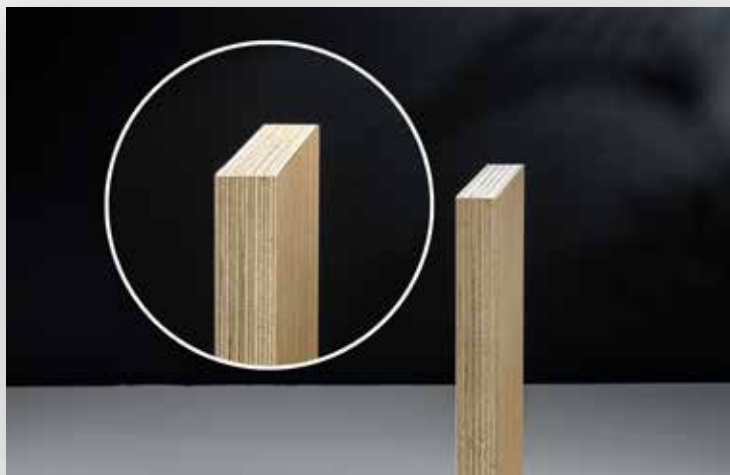
Environmental Standard:

Carb Phase 2 & TSCA Title VI

Sheets per Lift : 40



## BALTIC BIRCH UNFINISHED



### E004 Baltic Birch Unfinished (18mm)

Size: 48"x96"x3/4"  
 Size in Metric: 1220mmx2440mmx18mm  
 Sheets per Lift : 44

### E013 Baltic Birch Unfinished (15mm)

Size: 48"x96"x5/8"  
 Size in Metric: 1220mmx2440mmx15mm  
 Sheets per Lift : 44

### E014 Baltic Birch Unfinished (12mm)

Size: 48"x96"x1/2"  
 Size in Metric: 1220mmx2440mmx12mm  
 Sheets per Lift : 66

## BALTIC BIRCH

### Size:

48"x96"x3/4"  
 48"x96"x5/8"  
 48"x96"x1/2"

### Size in Metric:

1220mmx2440mmx18mm  
 1220mmx2440mmx15mm  
 1220mmx2440mmx12mm

### Veneer:

Baltic Birch

### Veneer Grade:

BB/BB

### Veneer Cut:

Rotary Cut

### Veneer Match:

Whole Piece Face

### Veneer Color:

Natural

### Finishing:

Unfinished

### Core Material:

13 Layers of Baltic Birch  
 11 Layers of Baltic Birch  
 8 Layers of Baltic Birch

### Environmental Standard:

Carb Phase 2 & TSCA Title VI

---

## PLYWOOD UNFINISHED

---



### **R006** **Pine Plywood**

Size: 48"x96"x3/4"

Size in Metric:

1220mmX2440mmX18mm

Veneer: Pine

Finishing: Unfinished

Core Material: 9 Layers of Pine

Environmental Standard:

Carb Phase 2 & TSCA Title VI

Sheets per Lift : 50-52

Advantages:

Water Resistant

---

### **A024** **Ply Birch E/E** *Furniture Grade*

Size: 48.5"x96.5"x3/4"

Size in Metric:

1232mmX2452mmX19mm

Veneer: White Birch

Finishing: Unfinished

Veneer Cut: Rotary Cut

Veneer Match: Whole Piece Face

Core Material: 2 Layers Of Eucalyptus and 9  
Layers of Poplar

Environmental Standard:

Carb Phase 2 & TSCA Title VI

Sheets per Lift : 50-52



---

## HARDWOOD VENEER PLYWOOD

---

**B004****White Oak Plywood Core**

Size: 48"x120"x3/4"

Size in Metric:

1232mmx3050mmx19mm

Veneer: White Oak

Veneer Grade: AAA/AA

Veneer Cut: Rift Cut

Veneer Match: Slip Match

Veneer Color: Natural

Finishing: Unfinished

Core Material: 11 Layers of Eucalyptus

Environmental Standard:

Carb Phase 2 & TSCA Title VI

Advantages:

Water Resistance ( Phenolic Glue)

**B017****Maple Plywood Core**

Size: 48.5"x96.5"x3/4"

Size in Metric:

1232mmx2452x19mm

Veneer: Maple

Veneer: A/B

Veneer: Cut: Rotary Cut

Veneer Match: Whole Piece Face

Finishing: Unfinished

Core Material:

2 Layers of Eucalyptus and 7  
Layers of Poplar

Environmental Standard:

Carb Phase 2 & TSCA Title VI

## BIRCH PLYWOOD PREFINISHED

Size:

48.5" x 96.5"

Size in Metric:

1232mm X 2452mm

Veneer:

Birch

Veneer Cut:

Rotary Cut

Veneer Match:

Whole Piece Face

Veneer Color:

Natural

Core Material:

Eucalyptus and Poplar

Environmental Standard:

Carb Phase 2 & TSCA Title VI & E1



---

3/4" (19mm)

**A005**

***Crownply***

Core Material: 2 Layers of Eucalyptus and 9 Layers of Poplar

Veneer Grade: C/D

Sheets per Lift : 48

Environmental Standard: Carb Phase 2

**A030**

Core Material: 2 Layers of Eucalyptus and 9 Layers of Poplar

Veneer Grade: D/D

Sheets per Lift : 48

Environmental Standard: E1

---

5/8" (16mm)

**A001**

***Crownply***

Core Material: 2 Layers of Eucalyptus and 7 Layers of Poplar

Veneer Grade: C/D+

Sheets per Lift : 54-60

Environmental Standard: Carb Phase 2

**A019**

Core Material: 2 Layers of Eucalyptus and 7 Layers of Poplar

Veneer Grade: D+/E

Sheets per Lift : 54-60

Environmental Standard: Carb Phase 2

**A010**

Core Material: 2 Layers of Eucalyptus and 7 Layers of Poplar

Veneer Grade: D+/E

Sheets per Lift : 54-60

Environmental Standard: E1

---

1/2" (12.7mm)

**A033**

Core Material: 7 Layers of Poplar

Veneer Grade: D+/D (One Side Prefinished)

Sheets per Lift : 70

Environmental Standard: Carb Phase 2

---

1/4" (6mm)

**A032**

Core Material: 5 Layers of Poplar

Veneer Grade: D+/D (One Side Prefinished)

Environmental Standard: Carb Phase 2

---

## RED OAK PLYWOOD PREFINISHED

---

Size:

48.5" x 96.5" x 5/8"

Size in Metric:

1232mm X 2452mm X 16mm

Veneer:

Red Oak

Veneer Cut:

Flat Cut

Veneer Color:

Natural

Finishing:

UV2 ( Prefinished)

Core Material:

Eucalyptus and Poplar

Environmental Standard:

Carb Phase 2 & TSCA Title VI

Sheets per Lift:

54-60



---

## MELAMINE PLYWOOD

---



Size:  
48.5" x 96.5"  
Size in Metric:  
1232mm X 2452mm  
Surface:  
White Melamine  
Color:  
White  
Environmental Standard:  
Carb Phase 2 & TSCA Title VI

### **C001** **White Melamine Plywood** **(16mm)**

Size: 48.5"x96.5"x5/8"  
Size in Metric: 1232mm X 2452mm X 16mm  
Core Material: 2 Layers of Eucalyptus and 7 layers of Poplar  
Sheets per Lift : 54-60

### **C002** **White Melamine Plywood** **(19mm)**

Size: 48.5"x96.5"x3/4"  
Size in Metric: 1232mm X 2452mm X 19mm  
Core Material: 5 Layers of Eucalyptus and 6 layers of Poplar  
Sheets per Lift : 48

---

## LSB (LIGHT STRAND BOARD) & PARTICLE BOARD

---

Size:

49"x97"x5/8"

49"x97"x3/4"

Size in Metric:

1245mmx2464mmx16mm

1245mmx2464mmx19mm

Finish:

White Melamine

Canadian Maple

Core:

LSB (Light Strand Board)

Particle Board

Environmental Standard:

Carb Phase 2 & TSCA Title VI



---

**White LSB****Q004**

Size: 49"x97"x5/8"

Size in Metric: 1245mmx2464mmx16mm

Core Material: LSB (Light Strand Board)

Sheets per Lift : 54

Environmental Standard: Carb Phase 2

**Q005**

Size: 49"x97"x3/4"

Size in Metric: 1245mmx2464mmx19mm

Core Material: LSB (Light Strand Board)

Sheets per Lift : 45

Environmental Standard: Carb Phase 2

---

**Canadian Maple LSB****Q008**

Size: 49"x97"x5/8"

Size in Metric: 1245mmx2464mmx16mm

Core Material: LSB (Light Strand Board)

Sheets per Lift : 54

Environmental Standard: Carb Phase 2

**Q009**

Size: 49"x97"x3/4"

Size in Metric: 1245mmx2464mmx19mm

Core Material: LSB (Light Strand Board)

Sheets per Lift : 45

Environmental Standard: Carb Phase 2

---

**White Particle Board****Q006**

Size: 49"x97"x5/8"

Size in Metric: 1245mmx2464mmx16mm

Core Material: Particle Board

Sheets per Lift : 54

Environmental Standard: Carb Phase 2

**Q007**

Size: 49"x97"x3/4"

Size in Metric: 1245mmx2464mmx19mm

Core Material: Particle Board

Sheets per Lift : 54

Environmental Standard: Carb Phase 2

---

## WHAT WE CAN OFFER?

### High Quality

We collaborate closely with our suppliers to ensure our products meet the highest standards. Using industry-leading technology, our products are perfect for your chic and innovative designs.

### Product Consistency

We exceed industry standards in quality control, ensuring that every piece of product you receive is consistent, reliable, and of the utmost quality.

### Competitive Prices

With our deep-rooted expertise in the logging industry, we directly negotiate with manufacturers to offer you the best prices without compromising on quality.

### Eco-Friendly

All our products come from Carb Phase 2 and TSCA Title VI certified manufacturers in China, ensuring that your purchases are environmentally responsible.

### Reliable Service

Our knowledgeable team is always ready to answer your inquiries, providing swift, professional assistance. Additionally, our logistics team ensures next-day delivery, getting your materials when you need them.

---

## FORMALDEHYDE EMISSIONS STANDARDS

Formaldehyde is a chemical used in resins (glues) to bond wood in products like plywood, particleboard, and medium-density fiberboard (MDF). but concerns about formaldehyde emissions have led to regulations and standards to limit exposure.

For the U.S. Market: Compliance with CARB Phase 2 or EPA TSCA Title VI is required.  
For the European Market: E1 is the requirement, while E0 recommended for high-end markets.

### **CARB Phase 2 (California Air Resources Board, P2)**

Composite wood products (particleboard, MDF, plywood) must meet  $\leq 0.05$  ppm

### **EPA TSCA Title VI (Toxic Substances Control Act)**

Hardwood plywood (HWPW):  $\leq 0.05$  ppm

Medium-density fiberboard (MDF):  $\leq 0.11$  ppm

Thin MDF ( $\leq 8$ mm):  $\leq 0.13$  ppm

Particleboard (PB):  $\leq 0.09$  ppm

### **E1 (European Standard EN 717-1)**

$\leq 0.124$  mg/m<sup>3</sup> (or  $\leq 0.10$  ppm)

### **E0 (Stricter European Standard)**

$\leq 0.07$  ppm (sometimes defined as  $\leq 0.04$  ppm)

---

## WHAT IS TFL?

Thermally Fused Laminate (TFL) panels are engineered by permanently bonding decorative paper, saturated with melamine resin, directly onto a composite wood core under high heat and pressure. This process creates a seamless, durable surface that replicates the look and texture of natural materials such as woodgrain or solid colors, with consistent quality and performance.

Durable Surface – Resistant to scratches, stains, and everyday wear

Low Maintenance – Easy to clean with no need for sealing or refinishing

Consistent Appearance – Uniform color and texture across panels and batches

Cost-Effective – Offers the look of real wood or premium finishes at a more accessible price point

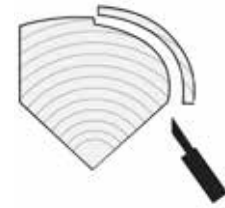
Eco-Friendly Option – Efficient use of wood fibers with low-emission manufacturing options available

Versatile Design – Available in a wide range of textures, finishes, and colors

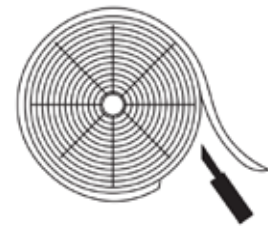
---

## VENEER CUT TYPES

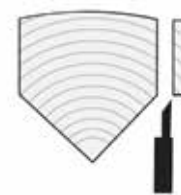
**Rift Cut Veneers** - A quarter log is affixed to a rotating plate on a specialized lathe. The cutting angle is carefully adjusted to produce an exceptionally straight and consistent grain. Rift cutting is particularly useful for reducing the “flake” effect that sometimes appears in quarter-sliced veneers, making it a preferred choice for applications requiring a uniform, clean-lined appearance. It is commonly used for oak veneers to achieve a sleek, high-end look.



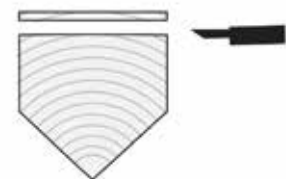
**Rotary Cut Veneers** - An entire log is mounted at its center on a lathe and rotated against a sharp blade, much like peeling layers from a roll of paper. This is the most cost-effective veneer-cutting technique and can produce large, continuous sheets from a single log.



**Quarter Cut Veneers** - A quartered log is positioned on a slicing table so that its growth rings meet the blade at a perpendicular angle. This results in a linear grain pattern, which appears as uniform stripes in some wood species, while in others, the grain may show slight variations.



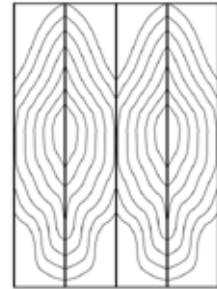
**Flat Cut (Plain Sliced) Veneers** - Half of a log is placed flat on the slicing table with the heartwood facing downward. The blade moves parallel to the log's length, creating a distinctive grain pattern that often resembles the pointed arch shapes seen in cathedral windows.



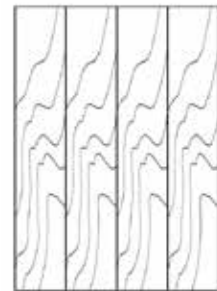
---

## VENEER MATCH TYPES

**Book Match** – This technique involves flipping every other veneer sheet, much like turning the pages of a book. This creates a symmetrical, mirrored wood grain effect that enhances visual balance.



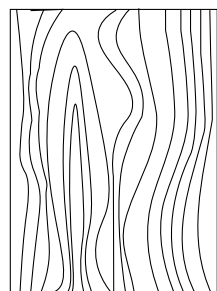
**Slip Match** – Veneer sheets are arranged in a continuous sequence without flipping, allowing the grain to flow naturally and maintain a uniform, repeating pattern.



**Random Match** – Veneer pieces are assembled without a specific pattern or alignment, resulting in a more organic, unstructured look with unique variations.



**Whole Piece Face Matching** – Whole Piece Face (WPF) Matching is a continuous piece of veneer peeled from a log using the Rotary Slicing method. The result is a single sheet of veneer that reveals a continuous grain pattern throughout the sheet. WPF is often desired for Birch, as it displays the natural grain character of the wood species.



## ABS VS PVC

Feature	Acrylonitrile Butadiene Styrene	Polyvinyl Chloride
Environmental Impact	Chlorine-free, no plasticizers, does not release toxic gases when burned	Contains chlorine, may release harmful gases when burned
Durability	High impact resistance, does not discolor or age easily	Wear-resistant, but may discolor or become brittle over time due to UV exposure
Appearance	Uniform color, smooth surface, ideal for high-end furniture	Wide range of colors, good gloss, but may yellow with aging
Flexibility	Relatively stiff, limited bending capability	More flexible, suitable for complex curved surfaces
Processing	Easy to sand, provides a more natural edge finish	Easy to process, ideal for mass production
Chemical Resistance	Resistant to acids and alkalis, not easily damaged by chemical cleaners	Some chemical resistance, but certain solvents may cause discoloration
Applications	High-end cabinets, furniture, projects with strict environmental requirements	Standard furniture, budget-friendly cabinets, large-scale production

## HDF VS MDF

Feature	HDF (High-Density Fiberboard)	MDF (Medium-Density Fiberboard)
Density	>800 kg/m <sup>3</sup>	600-800 kg/m <sup>3</sup>
Hardness	Harder and more durable	Softer in comparison
Moisture Resistance	Better, less prone to swelling	Absorbs moisture easily
Workability	Harder, more difficult to cut	Easier to machine, carve, and shape

---

## TYPES OF VENEER

Feature	Natural Wood Veneer	Reconstituted Veneer
Cutting Method	Sliced directly from logs	Processed, dyed, glued, and re-cut into veneer sheets
Grain Pattern	Unique and natural	Artificially designed and consistent
Appearance	Unique grain and texture, no two sheets are identical	Uniform grain, designed for consistency
Color Stability	May change over time due to oxidation and UV exposure	Maintains color for longer, less affected by aging
Cost	Higher, varies by wood species	Lower, due to controlled production
Market Preference	High-end furniture and custom designs	Large-scale manufacturing and commercial interiors

---

## LSB & PARTICLE BOARD

Feature	LSB (Light/Long Strand Board)	Particle Board (MFC)
Internal Structure	Long wood strands (Cross-layered)	Fine wood particles (Pressed)
Screw-Holding Power	Excellent. The interlocking long fibers grip screws tightly, allowing for re-assembly.	Fair, Core can crumble over time, especially if screws are removed and re-inserted.
Structural Strength	High (Resists warping/sagging)	Moderate (Prone to bending)
Moisture Resistance	High Resistance	Low (Swells easily when wet)

# ROYAL CROWN PLYWOOD

## **Ontario**

#5 - 110 Cidermill Ave, Vaughan, ON L4K 4L9

[toronto@royalcrownplywood.com](mailto:toronto@royalcrownplywood.com)

647-866-9529

## **British Columbia**

7237 Wilson Ave, Delta, BC, V4G 1E5

[info@royalcrownplywood.com](mailto:info@royalcrownplywood.com)

604-783-9662

<https://royalcrownplywood.com/>